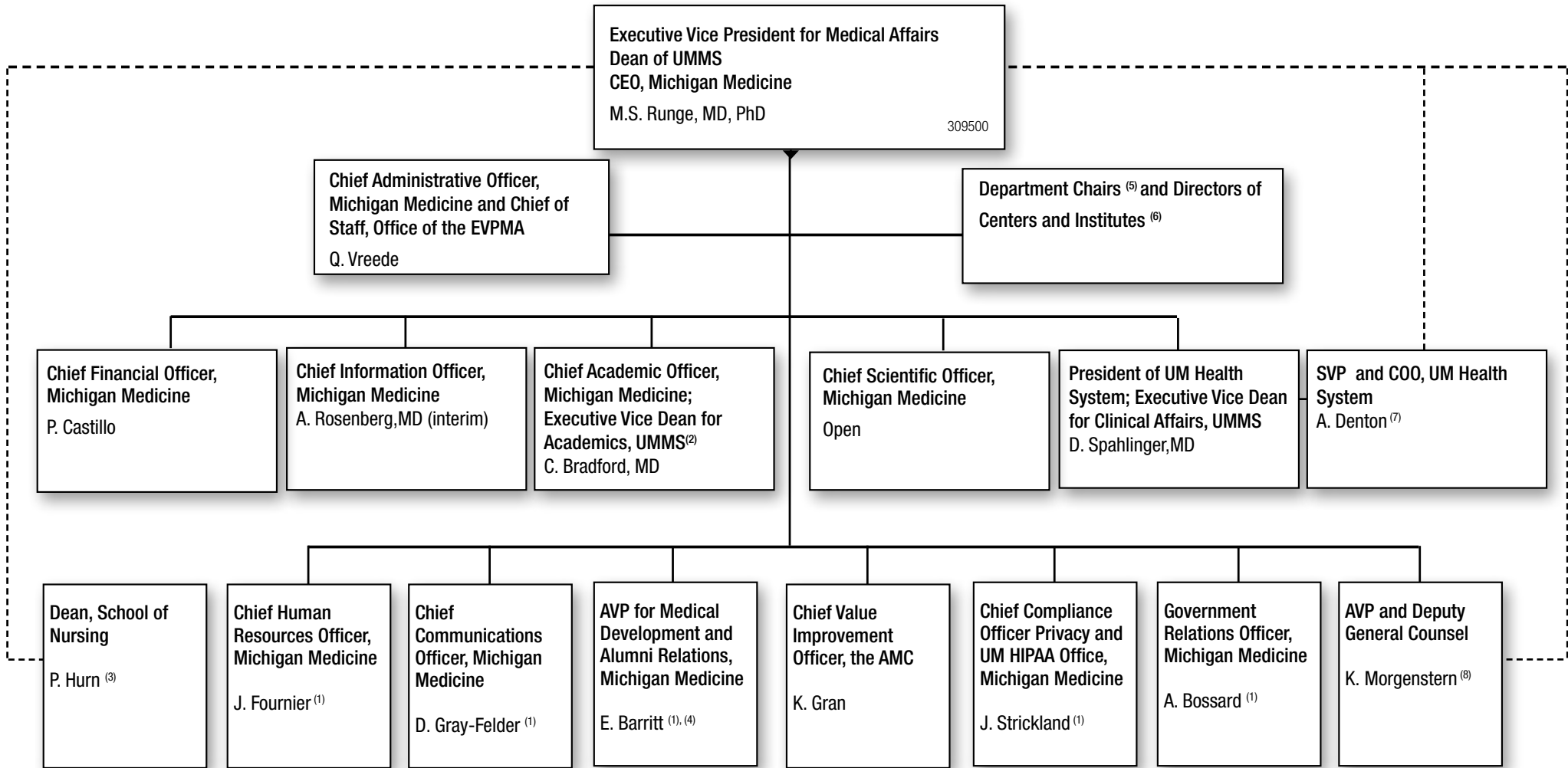


**MICHIGAN MEDICINE**  
OFFICE OF THE EXECUTIVE VICE PRESIDENT FOR MEDICAL AFFAIRS



<sup>1</sup> Administrative responsibilities delegated by the EVPMA to the Chief of Staff

<sup>2</sup> Dual reporting relationship to Provost

<sup>3</sup> Primary reporting relationship to Provost; dotted line to EVPMA for clinical activity only

<sup>4</sup> Dual reporting relationship to University Vice President of Development

<sup>5</sup> Dotted line reporting relationship to Executive Vice Deans and Chief Scientific Officer delegated by EVPMA/Dean

<sup>6</sup> Dotted line reporting relationship to Executive Vice Deans and Chief Scientific Officer or other medical school senior leadership delegated by EVPMA/Dean

<sup>7</sup> Solid line reporting relationship to President of Clinical Enterprise, dotted line to EVPMA for AMC facilities planning and health equity and inclusion matters in collaboration with the Vice Dean for Academic Affairs

<sup>8</sup> Solid line reporting relationship to University Vice President & General Counsel; dotted line reporting relationship to Office of the EVPMA